

2GIG-GDR1-345

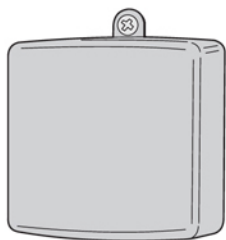
Universal Garage Door Receiver

For Garage Door Operator Remote Control with 2GIG-KEY2-345 Key Fobs

Installation Instructions



Technical Support
866-670-1591
www.2gig.com



CAUTION
RISK OF ELECTRICAL SHOCK
DO NOT OPEN



EXPLANATION OF GRAPHIC WARNING SYMBOLS



This symbol is intended to alert the user to the presence of un-insulated "dangerous voltage" within the product's enclosure that may be of sufficient magnitude to constitute a risk of electric shock.

* **WARNING!** To reduce the risk of fire or electric shock, do not expose this device to rain, water, or wet locations.



This symbol is intended to alert the user to the presence of important operating and maintenance (Servicing) instructions in the literature accompanying the device.

IMPORTANT SAFETY INSTRUCTIONS



TO REDUCE THE RISK OF SEVERE INJURY OR DEATH

1. READ AND FOLLOW ALL INSTALLATION INSTRUCTIONS
2. NEVER LET CHILDREN OPERATE, OR PLAY WITH DOOR CONTROLS! KEEP REMOTE CONTROL AWAY FROM CHILDREN!
3. ALWAYS KEEP MOVING DOOR IN SIGHT AND AWAY FROM PEOPLE AND OBJECTS UNTIL IT IS COMPLETELY CLOSED. NO ONE SHOULD CROSS THE PATH OF THE MOVING DOOR.
4. NEVER GO UNDER A STOPPED, PARTIALLY OPEN DOOR.



CAUTION
TO REDUCE THE RISK OF ELECTRIC SHOCK, DISCONNECT POWER TO THE RECEPTACLE BEFORE INSTALLING OR REMOVING THE UNIT. WHEN REMOVING RECEPTACLE COVER SCREW, COVER MAY FALL ACROSS PLUG PINS OR RECEPTACLE MAY BECOME DISPLACED. USE ONLY WITH DUPLEX RECEPTACLE HAVING CENTER SCREW. SECURE UNIT IN PLACE BY RECEPTACLE COVER SCREW.

IMPORTANT SAFETY INSTRUCTIONS

1. Read these instructions.
2. Keep these instructions.
3. Heed all warnings.
4. Follow all instructions.
5. Do not use this apparatus near water.
6. Clean only with dry cloth.
7. Do not install near any heat sources such as radiators, heat registers, stoves, or other apparatus (including amplifiers) that produce heat.
8. Do not defeat the safety purpose of the polarized or grounding-type plug. A polarized plug has two blades with one wider than the other. A grounding type plug has two blades and a third grounding prong. The wide blade or the third prong are provided for your safety. If the provided plug does not fit into your outlet, consult an electrician for replacement of the obsolete outlet.
9. Unplug this apparatus during lightning storms or when unused for long periods of time.
10. Refer all servicing to qualified service personnel. Servicing is required when the apparatus has been damaged in any way, such as power-supply cord or plug is damaged, liquid has been spilled or objects have fallen into the apparatus, the apparatus has been exposed to rain or moisture, does not operate normally, or has been dropped.

PRODUCT DESCRIPTION

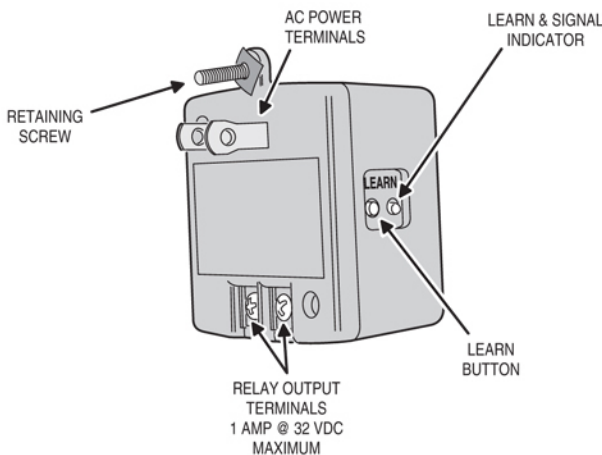
The Model 2GIG-GDR1-345 Receiver is designed for use as a radio receiver to remotely control a garage door operator with 2GIG-KEY2-345 key fob transmitters ONLY (the unit is not compatible with 2GIG-KEY1-345 key fobs or any other models of transmitters). The receiver is self-contained, not requiring an external transformer or power from the garage door operator. The receiver plugs directly into a 120 VAC outlet. A retaining screw is provided to secure the receiver to the outlet.

Two screw terminals on the receiver are for connection to the garage operator's pushbutton input. A dry contact, Form "A", relay in the receiver will provide a 1/2 second closure across the terminals when the receiver activates.

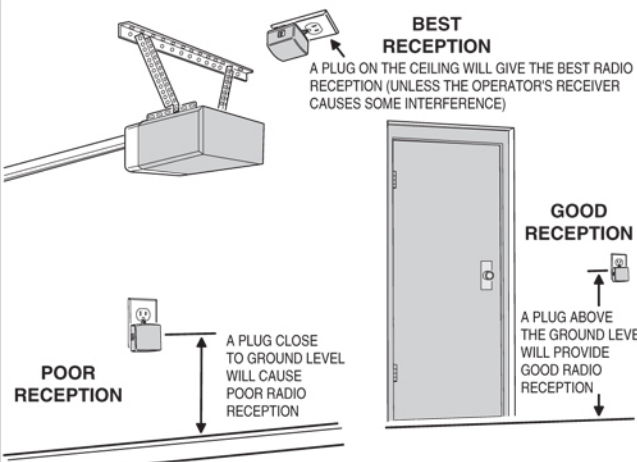
This garage door receiver does not contain a typical "coding switch". During setup, the receiver "learns" the transmitter's code by receiving a signal from the 2GIG-KEY2-345 transmitter which stores the transmitter's code into the receiver's memory. The receiver will retain its memory, even without power. The receiver can memorize up to ten 2GIG-KEY2-345 transmitters. The receiver will activate only from transmitters that have been stored in the receiver's memory.

The learn button and learn indicator are used for entering and erasing the transmitters in the receiver's memory. The learn indicator also lights to show RF activity and can be used for troubleshooting.

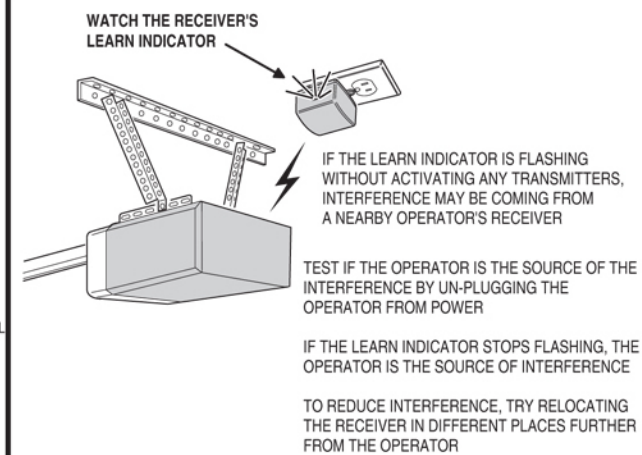
COMPONENT LOCATIONS



DETERMINE THE BEST RECEIVER LOCATION



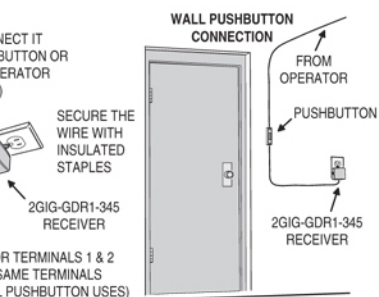
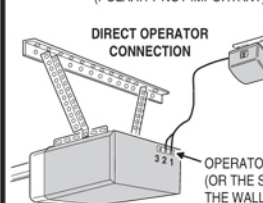
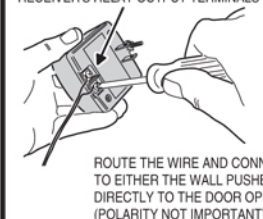
CHECK FOR INTERFERENCE FROM OTHER RECEIVERS



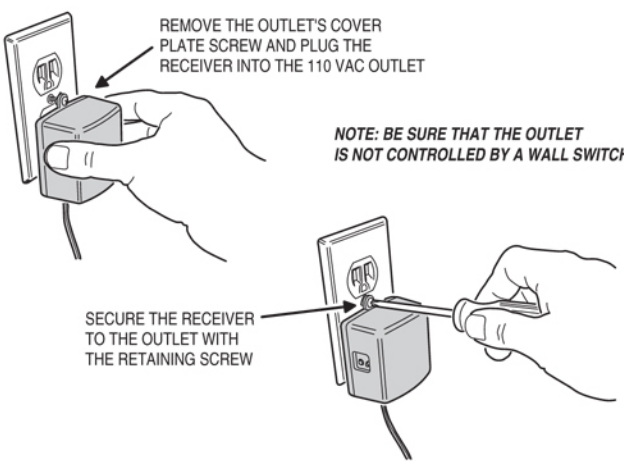
CONNECT THE RECEIVER TO THE OPERATOR

CONNECT 2-CONDUCTOR WIRE TO THE RECEIVER'S RELAY OUTPUT TERMINALS

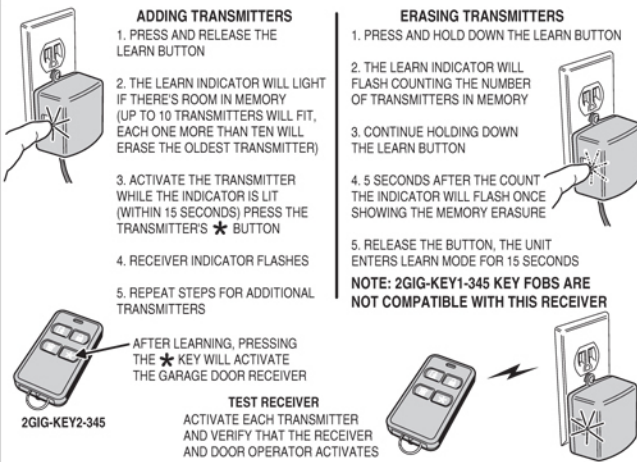
DISCONNECT POWER TO THE GARAGE DOOR OPERATOR BEFORE PROCEEDING
UL NOTE: ALL LOW VOLTAGE CLASS 2 CABLE USED WITH THE OPERATOR MUST BE UL LISTED TYPE CL2, CL2P, CL2R, OR CL2X OR OTHER CABLE WITH EQUIVALENT OR BETTER ELECTRICAL, MECHANICAL, AND FLAMMABILITY RATINGS



INSTALL THE RECEIVER



PROGRAM AND TEST THE RECEIVER



LIMITED WARRANTY

This 2gig Technologies Inc. product is warranted against defects in material and workmanship for twelve (12) months. **This warranty extends only to wholesale customers** who buy through 2gig Technologies Inc. authorized distribution channels. **2gig Technologies Inc. does not warrant this product to consumers.** Consumers should inquire from their selling dealer as to the nature of the dealer's warranty, if any. **There are no obligations or liabilities on the part of 2gig Technologies Inc. for consequential damages arising out of or in connection with use or performance of this product or other indirect damages with respect to loss of property, revenue, or profit, or cost of removal, installation, or reinstallation.** All implied warranties, including implied warranties for merchantability and implied warranties for fitness, are valid only until the warranty expires. **This 2gig Technologies Inc. Warranty is in lieu of all other warranties express or implied.**

IMPORTANT !!!

Radio controls provide a reliable communications link and fill an important need in portable wireless signaling. However, there are some limitations which must be observed.

- * For U.S. installations only: The radios are required to comply with FCC Rules and Regulations as Part 15 devices. As such, they have limited transmitter power and therefore limited range.
- * A receiver cannot respond to more than one transmitted signal at a time and may be blocked by radio signals that occur on or near their operating frequencies, regardless of code settings.
- * Changes or modifications to the device may void FCC compliance.
- * Infrequently used radio links should be tested regularly to protect against undetected interference or fault.
- * A general knowledge of radio and its vagaries should be gained prior to acting as a wholesale distributor or dealer, and these facts should be communicated to the ultimate users.

This device complies with FCC Part 15 and Canada Rules and Regulations. Operation is subject to the following two conditions: (1) This device may not cause harmful interference and (2) this device must accept any interference received, including interference that may cause undesired operation.