



STI-7300K CCTV Camera Housing

With Heater, Blower, Sun Shield and Mounting Bracket
STI-7300 (Above without Mounting Bracket)

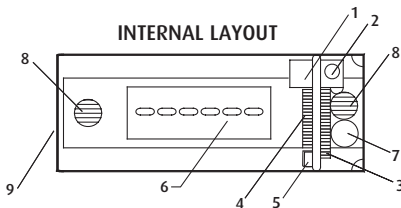
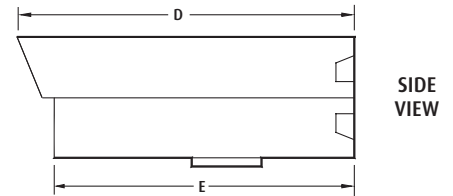
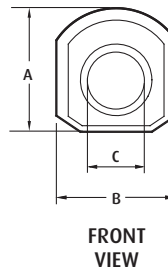


FEATURES

- Small indoor/outdoor enclosure
- Spring assisted forward opening lid
- ABS construction
- Includes heaters, blower and sun shield
- Temperature reduced by 4°F (2°C) with sun shield

DIMENSION DRAWINGS

Enclosure Dimension	STI-7300
A	4.5 in. (114mm)
B	3.94 in. (100mm)
C	2.35 in. (60mm)
D	11.81 in. (300mm)
E	9.9 in. (251mm)



1. Blower - 2 watts
2. Heater - 23 watts
3. Terminal
4. Terminal
5. Thermostats
6. Camera Mounting Plate
7. Wire Entry
8. Vent
9. Lens

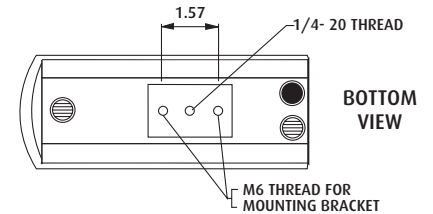


FIGURE OF THE TERMINAL

	24V Heater and Blower Power		Camera Power		Com	Iris	Focus	Zoom	Video	
	1	2	+	-					+	-
Terminal 3 (Line in)	1	2	3	4	5	6	7	8	9	10
Terminal 4 (From camera)	X	X	PA+	PB-	C	I	F	Z	V-	V+

SPECIFICATIONS

Model	STI-7300
Input Voltage	24 VAC
Input Power	10W
Material	ABS Plastic
Viewing Window	2.35" (60cm)
Max. Size Camera & Lens	5.90" x 2.48" x 2.48" (150 x 63 x 63mm)
Heater & Blower Activates	ON: 50°F ± 9°F (10°C ± 5°C) OFF: 79°F ± 9°F (26°C ± 5°C)
Blower Activates	ON: 95°F ± 9°F (35°C ± 5°C) OFF: 72°F ± 9°F (22°C ± 5°C)
Weight - Camera housing	2.13 lbs. (.97 kg)
Weight - Mounting brkt.	1.92 lbs. (.87 kg)
Gross Weight (STI-7300)	2.35 lbs. (1.06 kg)
Gross Weight (STI-7300K)	5.25 lbs. (2.38 kg)

THIS PACKAGE INCLUDES:

PCS.

- 1 Housing with heater, blower and sun shield
 - 2 Vent plugs
 - 1 Cord grip
 - 2 Screws (M6 x 8mm) for housing to bracket
 - 1 Screw 1/4 - 20 x 3/8" (for camera)
 - 1 Mounting Bracket (STI-7300K only)
 - 3 Screws (M4 x 40mm)
 - 3 Anchors
- } With Wall Mount Bracket Only