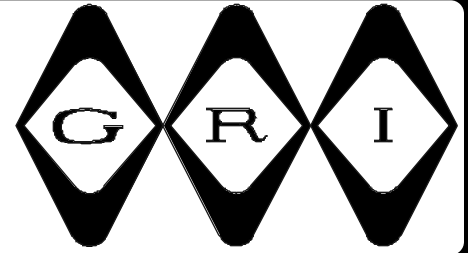


SHOCKGARD USA



Shockgard 1 SG-1



- ◆ Solid State Piezo Electric Sensor ◆ No Processor Unit Required
- ◆ Bi-Colored Latching LED Indicator For Visual Confirmation
- ◆ Pulse Count and Gross Attack ◆ Non-Latching Relay
- ◆ On Board Tamper Switch, In Series With Alarm Relay Contacts
- ◆ Wide Range of Surface Protection Including: Glass, Wall, Doors, Etc.
- ◆ Available In White and Brown ◆ Wide Input Voltage Range
- ◆ Small Aesthetically Pleasing Design

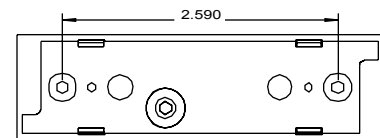
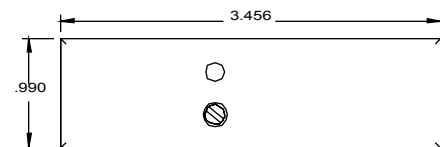
Detection Range (*)

Surface	Brick Wall	Steel	Wood	Concrete	Plywood	Gyproc	Glass
Radius	8 ft.	10 ft.	11.5 ft.	5 ft.	13 ft.	8 ft.	11.5 ft.

(*) All values quoted are typical and are subject to practical testing which must be made for each installation. In some environments, attenuation may be very high.

Technical Specifications	Shockgard 1
Supply Voltage	9-15 Volt DC, Regulated
Current Consumption Quiescent	15mA Maximum
Current Consumption Alarm	16mA Maximum Flashing LED 27mA
Temperature Limit	-4°F to +140°F (-20°C to +60°C)
Relative Humidity at 30°C	0-90%
Sensitivity Setting	Dual Stage Potentiometer
Latching/Non Latching	1st + Subsequent or Any + 6 Wire
Indicator	Two Color LED
Dimensions	23 x 25 x 86 mm
Relay Contact Rating	150mA 24V Resistive 10 Ohm 1/4 Watt
Time Relay Open in Alarm	1 Second Minimum
Pulse Count	2, 4 or 6
Max No. of units on any Latch	80
Max. No of units on 1st to Latch	10

This product is suitable for use in systems designed to comply with EN50131-1 and PD6662:2004 at grade 3 and environmental class 2.



BOTTOM
(Mounting Hole)

GEORGE RISK INDUSTRIES, INC.
GR.I PLAZA
KIMBALL, NE 69145

BA-172 9/13/2007

TOLL-FREE 1-800-445-5218 • 1-800-523-1227
(308) 235-4645 • FAX (308) 235-3561
E-MAIL: grisales@megavision.com
WEB SITE: www.grisk.com